

CTNNB1 (S45F)

Catalog Number: 26308

Gene Symbol: Beta-catenin, CTNNB, Catenin beta-1

Description: Anti-CTNNB1 (S45F) Mouse Monoclonal Antibody

Background: CTNNB1 protein is a dual function protein. It is a subunit of a complex of proteins that form adherens junctions, which are important for the establishment and maintenance of epithelial cell layers by regulating cell growth and adhesion between adjacent cells. CTNNB1 protein also pulls double duty as an intracellular signal transducer in the Wnt signaling pathway. Mutations of CTNNB1 have been implicated in the pathogenesis of several cancers.

Immunogen: A synthetic peptide from the internal region of CTNNB1 which includes the mutation of S45F, human origin.

Tested applications: ELISA, WB, IHC

Recommended dilutions:

ELISA: 1:1000-1:5000

WB: 1:500-1:1000

IHC: 1:50-1:100

Concentration: 2 mg/ml

Host: Mouse

Clonality: Monoclonal

Purity: Purified from ascites

Format: Liquid

Storage buffer:

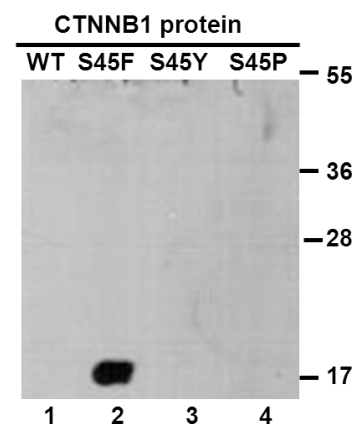
Preservative: no

Constituents: PBS (without Mg^{2+} and Ca^{2+}), pH 7.4, 150 mM NaCl, 50% glycerol

Species Reactivity: Recognizes S45F mutant, but not wild-type CTNNB1 of vertebrates.

Storage Conditions: Store at $-20^{\circ}C$. Avoid freeze / thaw cycles.

Western blot:

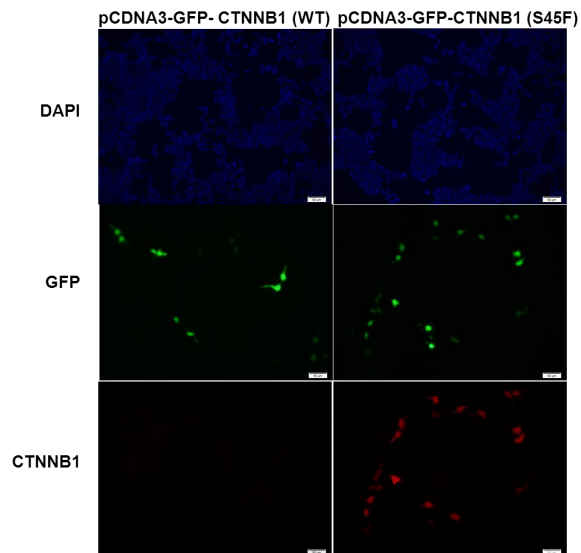


WB: anti-CTNNB1 (S45F) mAb

Western blot analysis of recombinant CTNNB1 (S45F) and wildtype proteins.

Purified His-tagged CTNNB1 (S45F) protein (lane2), CTNNB1 (S45Y) protein (lane3), CTNNB1 (S45P) protein (lane4) protein and corresponding wild-type protein (lane1) were blotted with anti-CTNNB1 (S45F) monoclonal antibody (Cat. #26308).

Immunofluorescence:



Immunofluorescence of cells expressing CTNNB1 proteins with anti-CTNNB1 (S45F) antibody. HEK293T cells were transfected with pCDNA3-GFP-CTNNB1 (WT) plasmid (left column) or pCDNA3-GFP-CTNNB1 (S45F) plasmid (right column), then fixed and stained with anti-CTNNB1 (S45F) monoclonal antibody (Cat. #26308).